

Degrees Conferred

Five-Year Trend Data

University Level

Degrees Conferred by Student Level	2
--	---

College Level

Five-Year Trend of Degrees Conferred by Student Level

College Totals	3
----------------------	---

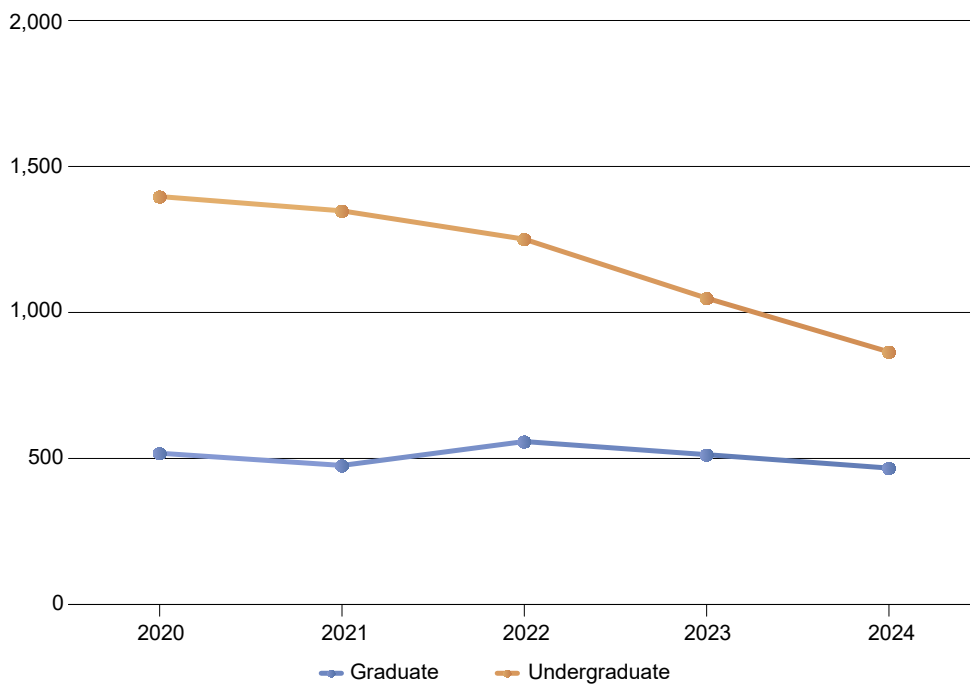
Five-Year Trend of Degrees Conferred by Department

College of Arts & Sciences Undergraduate Degrees	4
College of Arts & Sciences Graduate Degrees	6
College of Business & Technology Undergraduate Degrees	8
College of Business & Technology Graduate Degrees	9
Goodwin College of Education Undergraduate Degrees	10
Goodwin College of Education Graduate Degrees	11
Interdisciplinary Programs Undergraduate Degrees	13
Nontraditional Degree Programs Undergraduate Degrees	14

Five-Year Trend of Degrees Conferred

University Total

	FY2020	FY2021	FY2022	FY2023	FY2024
Undergraduate	1,397	1,348	1,251	1,049	865
Graduate	518	476	558	513	467
UNIVERSITY TOTAL	1,915	1,824	1,809	1,562	1,332
<i>Annual % Change</i>	<i>-0.9%</i>	<i>-4.8%</i>	<i>-0.8%</i>	<i>-13.7%</i>	<i>-14.7%</i>
<i>% Change FY2020- FY2024</i>					<i>-30.4%</i>



Five-Year Trend of Degrees Conferred by Student Level

College Totals

College	Student Level	FY2020	FY2021	FY2022	FY2023	FY2024	One-year Change	Five-year Change
College of Arts & Sciences	Undergraduate	704	639	560	473	415	-12.3%	-41.1%
	Graduate	158	152	175	157	130	-17.2%	-17.7%
College of Arts & Sciences Total		862	791	735	630	545	-13.5%	-36.8%
College of Business & Technology	Undergraduate	400	387	371	309	227	-26.5%	-43.2%
	Graduate	72	83	56	66	73	10.6%	1.4%
College of Business & Technology Total		472	470	427	375	300	-20.0%	-36.4%
Goodwin College of Education	Undergraduate	132	211	214	180	146	-18.9%	10.6%
	Graduate	288	241	327	290	264	-9.0%	-8.3%
Goodwin College of Education Total		420	452	541	470	410	-12.8%	-2.4%
Interdisciplinary Programs	Undergraduate	3	1	0	0	0	---	-100.0%
Interdisciplinary Programs Total		3	1	0	0	0	---	-100.0%
Nontraditional Degree Programs	Undergraduate	158	110	106	87	77	-11.5%	-51.3%
Nontraditional Degree Programs Total		158	110	106	87	77	-11.5%	-51.3%
University	Undergraduate	1,397	1,348	1,251	1,049	865	-17.5%	-38.1%
	Graduate	518	476	558	513	467	-9.0%	-9.8%
University Total		1,915	1,824	1,809	1,562	1,332	-14.7%	-30.4%

College of Arts & Sciences

Five-Year Trend of Undergraduate Degrees Conferred by Department and Degree Program

Department	Degree Program	FY2020	FY2021	FY2022	FY2023	FY2024	One-year Change	Five-year Change
Anthropology	B.A. in Anthropology	5	5	7	2	6	200.0%	20.0%
Art	B.A. in Art	19	14	20	14	10	-28.6%	-47.4%
	B.A. in Art (K-12 Education)	4	2	2	4	3	-25.0%	-25.0%
	B.F.A. in Graphic Design	6	6	9	13	18	38.5%	200.0%
Biology	B.S. in Biology	83	71	62	62	51	-17.7%	-38.6%
	B.S. in Biology (Secondary Ed.)	2	0	0	0	0	---	-100.0%
Chemistry	B.S. in Chemistry	24	14	18	9	7	-22.2%	-70.8%
Communication Media & Theatre	B.A. in Communication, Media & Theatre	70	58	57	35	26	-25.7%	-62.9%
Earth Science	B.S. in Earth Science	8	5	4	3	0	-100.0%	-100.0%
Economics	B.A. in Economics	16	18	16	10	8	-20.0%	-50.0%
English	B.A. in English	35	32	24	21	21	0.0%	-40.0%
	B.A. in English (Secondary Ed.)	11	6	0	0	0	---	-100.0%
Geography & Environmental Studies	B.A. in Environmental Studies	16	7	7	3	6	100.0%	-62.5%
	B.A. in Geography	4	2	3	2	4	100.0%	0.0%
Global Studies	B.A. in Global Studies	0	6	6	0	5	---	---
History	B.A. in History	24	17	24	16	6	-62.5%	-75.0%
	B.A. in History (Secondary Ed.)	5	6	1	0	0	---	-100.0%
Justice Studies	B.A. in Criminal Justice	0	0	0	0	1	---	---
	B.A. in Justice Studies	43	50	37	33	33	0.0%	-23.3%
Mathematics	B.A. in Mathematics	16	18	17	7	7	0.0%	-56.2%
	B.A. in Mathematics (Secondary Ed.)	6	14	0	0	0	---	-100.0%
Music	B.A. in Music	5	5	1	4	6	50.0%	20.0%
	B.M. in Music Education	0	0	0	1	5	400.0%	---

Note: Fiscal Year (FY) includes degrees from the summer, fall and spring, e.g., FY 2018 includes degrees from Summer 2017, Fall 2017 and Spring 2018.

College of Arts & Sciences

Five-Year Trend of Undergraduate Degrees Conferred by Department and Degree Program

Department	Degree Program	FY2020	FY2021	FY2022	FY2023	FY2024	One-year Change	Five-year Change
Music	B.M. in Music Performance	3	5	0	2	3	50.0%	0.0%
	Bachelor of Music (K-12 Education)	0	3	1	0	0	---	---
Other Departments	B.A. in Latina/o & Latin American Studies	1	2	2	2	0	-100.0%	-100.0%
Philosophy	B.A. in Philosophy	2	4	6	1	7	600.0%	250.0%
Physics	B.S. in Environmental Science	2	6	3	4	2	-50.0%	0.0%
	B.S. in Physics	2	3	4	0	2	---	0.0%
Political Science	B.A. in Political Science	18	15	16	15	7	-53.3%	-61.1%
Psychology	B.A. in Psychology	108	99	78	89	79	-11.2%	-26.9%
Social Work	Bachelor of Social Work	132	102	96	99	76	-23.2%	-42.4%
Sociology	B.A. in Sociology	20	23	18	13	6	-53.8%	-70.0%
Women's and Gender Studies	B.A. in Women's, Gender & Sexuality Studies	0	0	1	0	0	---	---
	B.A. in Women's and Gender Studies	1	3	1	0	1	---	0.0%
World Languages & Cultures	B.A. in Spanish	12	9	12	8	2	-75.0%	-83.3%
	B.A. in Spanish (K-12 Education)	1	9	7	1	7	600.0%	600.0%
Total		704	639	560	473	415	-12.3%	-41.1%

College of Arts & Sciences

Five-Year Trend of Graduate Degrees Conferred by Department and Degree Program

Department	Degree Program	FY2020	FY2021	FY2022	FY2023	FY2024	One-year Change	Five-year Change
Biology	M.S. in Biology	7	9	7	6	6	0.0%	-14.3%
Chemistry	M.S. in Chemistry	12	6	10	4	5	25.0%	-58.3%
Communication Media & Theatre	M.A. in Communication, Media & Theatre	4	14	7	5	6	20.0%	50.0%
English	M.A. in English (Composition)	1	2	1	4	0	-100.0%	-100.0%
	M.A. in English (Literature)	28	9	9	4	6	50.0%	-78.6%
	M.A. in English (TLP)	1	0	0	1	0	-100.0%	-100.0%
Geography & Environmental Studies	M.A. in Geography & Environmental Studies	2	1	8	9	1	-88.9%	-50.0%
History	M.A. in History	5	7	5	5	3	-40.0%	-40.0%
	M.A. in History (TLP)	1	0	1	0	0	---	-100.0%
Linguistics	M.A. in Linguistics	7	9	4	4	1	-75.0%	-85.7%
Mathematics	M.S. in Mathematics	8	3	22	3	2	-33.3%	-75.0%
	M.S. in Mathematics (TLP)	2	1	0	0	0	---	-100.0%
Music	M.A. in Music	6	7	3	6	3	-50.0%	-50.0%
	M.A. in Music (TLP)	0	0	0	0	1	---	---
Political Science	M.A. in Political Science	5	6	5	6	4	-33.3%	-20.0%
Psychology	M.A. in Gerontology	2	4	0	2	3	50.0%	50.0%
Social Work	Master of Social Work	21	12	26	49	25	-49.0%	19.0%
	Master of Social Work (Advanced standing)	21	49	37	22	43	95.5%	104.8%
Teaching English to Speakers of Other Languages	M.A. in Teaching English as a Second/Foreign Language	3	3	1	0	0	---	-100.0%
	M.A. in Teaching English to Speakers of Other Languages	21	5	18	20	18	-10.0%	-14.3%
World Languages & Cultures	M.A. in Latin American Literatures &	1	5	9	7	3	-57.1%	200.0%

Note: Fiscal Year (FY) includes degrees from the summer, fall and spring, e.g., FY 2018 includes degrees from Summer 2017, Fall 2017 and Spring 2018.

College of Arts & Sciences

Five-Year Trend of Graduate Degrees Conferred by Department and Degree Program

Department	Degree Program	FY2020	FY2021	FY2022	FY2023	FY2024	One-year Change	Five-year Change
World Languages & Cultures	Cultures							
	M.A. in Latin American Literatures & Cultures (TLP)	0	0	2	0	0	---	---
Total		158	152	175	157	130	-17.2%	-17.7%

College of Business & Technology

Five-Year Trend of Undergraduate Degrees Conferred by Department and Degree Program

Department	Degree Program	FY2020	FY2021	FY2022	FY2023	FY2024	One-year Change	Five-year Change
Accounting, Business Law, & Finance	B.S. in Accounting	78	79	72	55	41	-25.5%	-47.4%
	B.S. in Finance	58	55	47	33	22	-33.3%	-62.1%
	B.S. in General Business Administration	30	45	40	26	23	-11.5%	-23.3%
Computer Science	B.S. in Computer Science	120	106	111	103	86	-16.5%	-28.3%
	B.S. in Cybersecurity	0	0	0	0	5	---	---
Management	B.S. in General Business Administration	0	0	0	0	2	---	---
	B.S. in Management	70	68	60	56	26	-53.6%	-62.9%
Marketing	B.S. in Marketing	44	34	41	36	22	-38.9%	-50.0%
Total		400	387	371	309	227	-26.5%	-43.2%

College of Business & Technology

Five-Year Trend of Graduate Degrees Conferred by Department and Degree Program

Department	Degree Program	FY2020	FY2021	FY2022	FY2023	FY2024	One-year Change	Five-year Change
Accounting, Business Law, & Finance	M.S. in Accounting	16	21	12	13	7	-46.2%	-56.2%
Computer Science	M.S. in Computer Science	26	27	18	16	38	137.5%	46.2%
Management	Master of Business Administration (M.B.A.)	30	35	26	37	28	-24.3%	-6.7%
Total		72	83	56	66	73	10.6%	1.4%

Goodwin College of Education

Five-Year Trend of Undergraduate Degrees Conferred by Department and Degree Program

Department	Degree Program	FY2020	FY2021	FY2022	FY2023	FY2024	One-year Change	Five-year Change
Educational Inquiry & Curriculum Studies	B.A. in Inner City Studies	4	5	1	1	0	-100.0%	-100.0%
	B.A. in Urban Community Studies	0	0	0	1	2	100.0%	---
Health Sciences and Physical Education	B.A. in Physical Education	16	30	27	19	17	-10.5%	6.2%
	B.S. in Community Health	17	17	10	5	14	180.0%	-17.6%
Literacy, Leadership, and Development	B.A. in Human Resource Development	44	44	55	30	15	-50.0%	-65.9%
Special Education	B.A. in Special Education	5	14	12	26	26	0.0%	420.0%
Teacher Education	B.A. in Bilingual/Bicultural Education-Elementary	3	3	0	0	0	---	-100.0%
	B.A. in Early Childhood Education	12	37	38	40	33	-17.5%	175.0%
	B.A. in Elementary Education	30	48	41	41	26	-36.6%	-13.3%
	B.A. in Elementary Education (Bilingual Endorsement)	1	7	16	11	5	-54.5%	400.0%
	B.A. in Middle Level Education	0	6	14	6	8	33.3%	---
Total		132	211	214	180	146	-18.9%	10.6%

Goodwin College of Education

Five-Year Trend of Graduate Degrees Conferred by Department and Degree Program

Department	Degree Program	FY2020	FY2021	FY2022	FY2023	FY2024	One-year Change	Five-year Change
Counselor Education	M.A. in Counseling (Clinical Mental Health)	5	15	22	31	39	25.8%	680.0%
	M.A. in Counseling (Community)	1	0	0	0	0	---	-100.0%
	M.A. in Counseling (Rehabilitation)	13	6	4	11	8	-27.3%	-38.5%
	M.A. in Counseling (School)	34	10	22	16	17	6.2%	-50.0%
	M.A. in Couple and Family Counseling	0	0	0	2	11	450.0%	---
	M.A. in Family Counseling	7	3	15	11	0	-100.0%	-100.0%
Educational Inquiry & Curriculum Studies	M.A. in Community and Teacher Leaders	15	11	6	6	10	66.7%	-33.3%
	M.A. in Inner City Studies	5	3	1	0	2	---	-60.0%
	M.A. in Urban Community Studies	0	3	4	1	5	400.0%	---
	M.A.T. in Secondary Education	3	24	38	31	37	19.4%	1,133.3%
Health Sciences and Physical Education	M.S. in Exercise and Sport Science	0	0	2	11	11	0.0%	---
	M.S. in Exercise Science	5	4	1	1	0	-100.0%	-100.0%
	Master of Public Health	0	0	15	2	7	250.0%	---
Literacy, Leadership, and Development	M.A. in Educational Leadership (Higher Ed)	16	20	16	16	13	-18.8%	-18.8%
	M.A. in Educational Leadership (School)	75	62	60	45	32	-28.9%	-57.3%
	M.A. in Human Resource Development	10	13	10	4	9	125.0%	-10.0%
	M.A. in Literacy Education	35	32	23	18	18	0.0%	-48.6%
Special Education	M.A. in Gifted Education	15	0	0	0	0	---	-100.0%
	M.A. in Special Education (LBS I)	9	10	37	37	21	-43.2%	133.3%
	M.S. in Special Education (LBS II)	16	11	19	14	11	-21.4%	-31.2%
Teacher Education	M.A.T. in Early Childhood Education	0	2	0	0	0	---	---
	M.A.T. in Elem & Middle School	4	1	1	0	0	---	-100.0%

Note: Fiscal Year (FY) includes degrees from the summer, fall and spring, e.g., FY 2018 includes degrees from Summer 2017, Fall 2017 and Spring 2018.

Goodwin College of Education

Five-Year Trend of Graduate Degrees Conferred by Department and Degree Program

Department	Degree Program	FY2020	FY2021	FY2022	FY2023	FY2024	One-year Change	Five-year Change
Teacher Education	M.A.T. in Elementary Education	12	6	23	25	8	-68.0%	-33.3%
	M.A.T. in Middle Level Education	0	0	4	3	2	-33.3%	---
	M.S. in Instruction in Language Arts-Secondary Ed.	0	0	1	0	0	---	---
	M.S. in Teaching and Inquiry	8	5	3	5	3	-40.0%	-62.5%
Total		288	241	327	290	264	-9.0%	-8.3%

Interdisciplinary Programs

Five-Year Trend of Undergraduate Degrees Conferred by Department and Degree Program

Department	Degree Program	FY2020	FY2021	FY2022	FY2023	FY2024	One-year Change	Five-year Change
Other Departments	B.A. in Global Studies	3	1	0	0	0	---	-100.0%
Total		3	1	0	0	0	---	-100.0%

Nontraditional Degree Programs

Five-Year Trend of Undergraduate Degrees Conferred by Department and Degree Program

Department	Degree Program	FY2020	FY2021	FY2022	FY2023	FY2024	One-year Change	Five-year Change
Other Departments	B.A. in Interdisciplinary Studies	139	95	95	79	67	-15.2%	-51.8%
	B.A. or B.S. in University Without Walls	19	15	11	7	10	42.9%	-47.4%
	Board of Governors B.A.	0	0	0	1	0	-100.0%	---
Total		158	110	106	87	77	-11.5%	-51.3%