

# N-Safe

## Emergency Notification



August 2016



# N-Safe

An Introduction



# Emergency Notification

## About N-Safe and 911 Shield

- N-Safe is Northeastern's new emergency notification system designed to quickly communicate information to the University Community about safety, closings and inclement weather.
- N-Safe utilizes the free 911 Shield mobile application, allowing easy access to emergency information via smartphones.
- All students, faculty and staff must register to receive notification
  - Register on the website:  
<https://portal.publicsafetycloud.net/community-alerts/Northeastern-Illinois-University>
  - Download the free mobile app on Apple's App Store or Google Play (only available on iOS and Androids at this time)

# Register online

<https://portal.publicsafetycloud.net/community-alerts/Northeastern-Illinois-University>

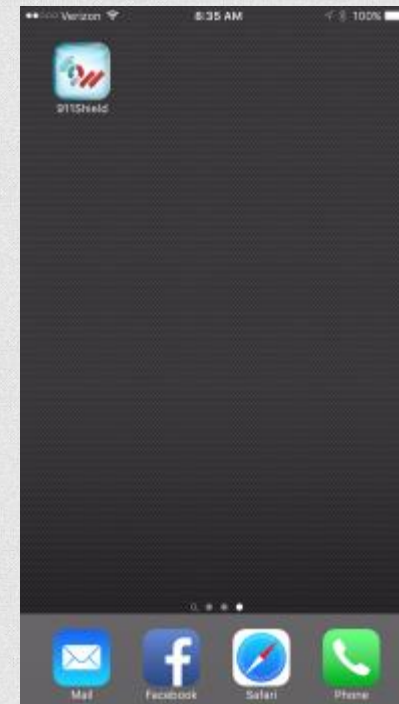
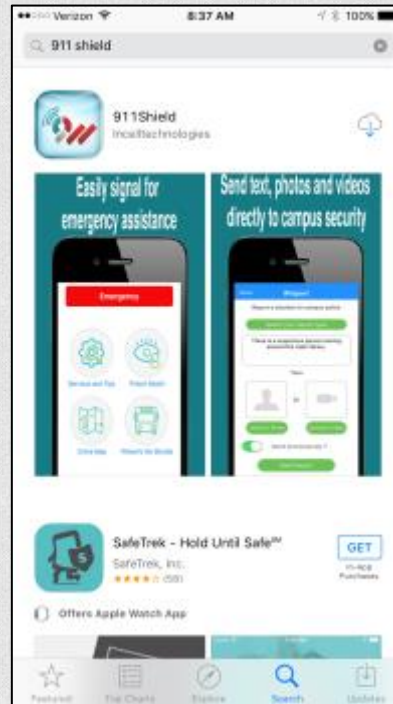
The screenshot shows a web browser window with the URL <https://portal.publicsafetycloud.net/community-alerts/Northeastern-Illinois-University>. The page features the Northeastern Illinois University logo and the 911 Cellular logo. A teal banner at the top reads "Register To Receive Alerts". Below this, the text "Northeastern Illinois University" is displayed, followed by a link for "Already registered? Login Here". A disclaimer states: "Please fill out the information below to receive alerts from safety officials. Your information will only be used for notification purposes. 911 Cellular does NOT share any of your information with third parties." The form is divided into two sections: "Personal Information" and "Address Information". The "Personal Information" section includes fields for "First Name \*", "Last Name \*", "Email \*", "Landline Number", "Cell Phone Number \*", and "Language Preference" (set to "No"). There is also a "Groups \*" dropdown menu with "NEIU Community" selected. A note at the bottom of the groups section says "\* To select multiple groups, hold down the shift key." The "Address Information" section is partially visible at the bottom.



# Or register via 911 Shield

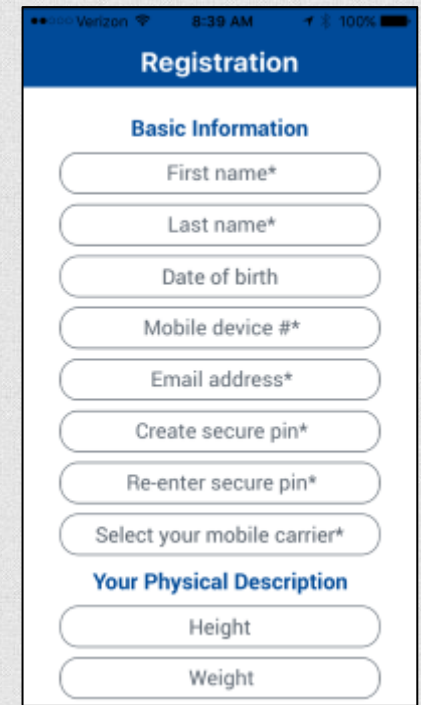
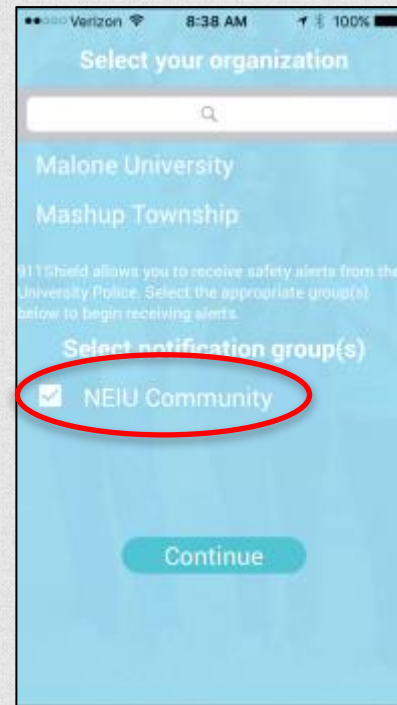
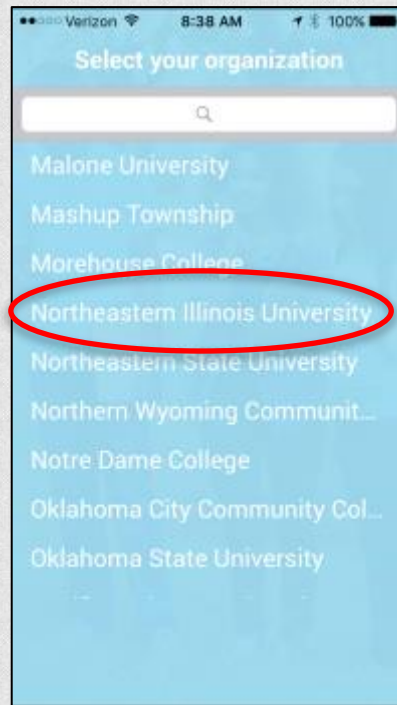
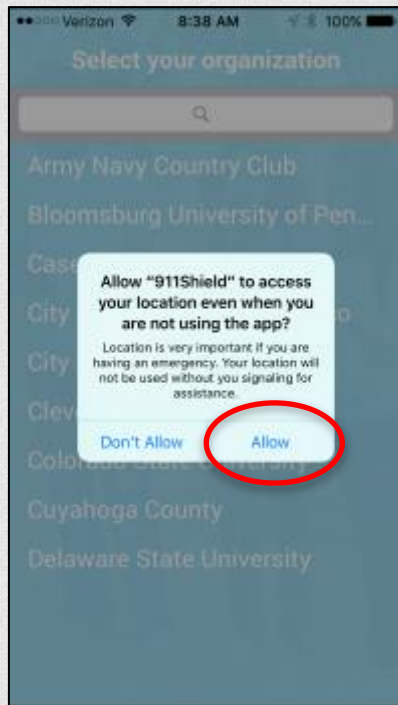
Download mobile application

- Google Play
- Apple App Store



# Register via 911 Shield

Follow the instructions on the 911 Shield app

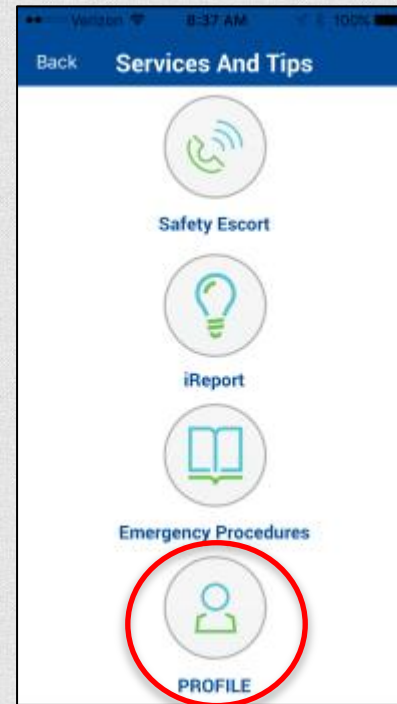
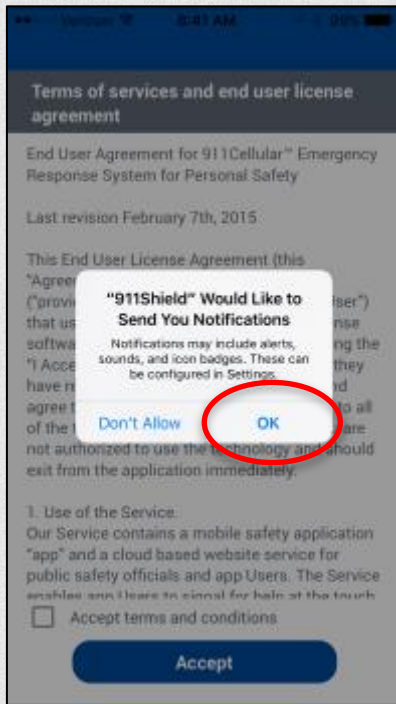


A complete profile helps officers locate you in an emergency



# Register via 911 Shield

Follow the instructions on the 911 Shield app

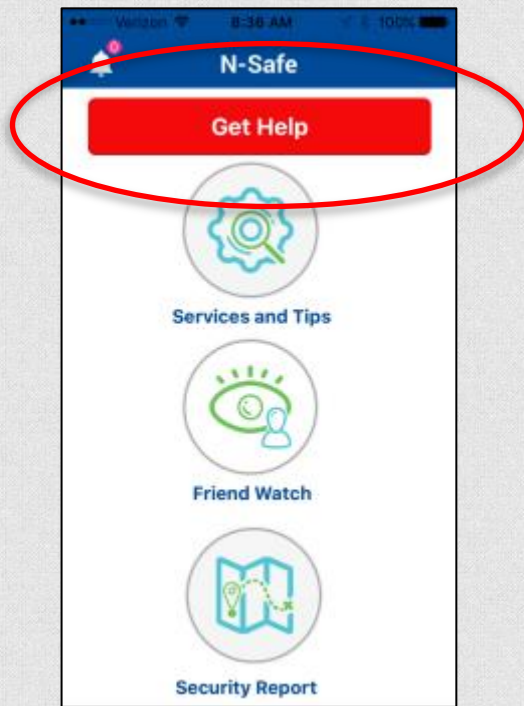


Update your profile when necessary



# N-Safe / 911 Shield Features

## Making Emergency Calls



Click “Get Help” to make an emergency call.

Pressing the button begins a five-second countdown during which the app determines your WiFi or GPS location.

If pressed at a University location, three actions occur at the end of the countdown:

1. Sends your location to a map to NEIU Police
2. Sends your profile to NEIU Police
3. Connects you by phone to NEIU Police

If pressed outside the University, or if Location Services are off, you will be connected to 911. Your location and profile will be unavailable to non-NEIU Police.



# N-Safe / 911 Shield Features

Using the Friend Watch function



Click “Friend Watch” if you are concerned about your safety and want to let your emergency contacts aware of what you’re doing.

(You must establish emergency contacts and a PIN in your profile.)

Type in your activity (walking the dog, jogging, working in a lab alone at night) along with an end time and then press Start.

If you do not type in your PIN before the end time of your activity, your emergency contacts will receive an SMS text message informing them that you might need assistance. They will also receive a description of your activity as well as a link to a map displaying your last location.



# N-Safe Replaces N-Alert

You must register for N-Safe even if you've previously registered for N-Alert

- N-Safe is Northeastern's new emergency notification system, replacing an older system, N-Alert, which has been phased out.
- N-Safe offers enhanced and additional functionality.
- Those who have registered for N-Alert in the past must register for N-Safe.

Northeastern is committed to creating a safe learning environment for everyone. Please spread the word and let others in the Northeastern Community know about N-Safe. For more safety information, contact NEIU Police at 773-442-4100.